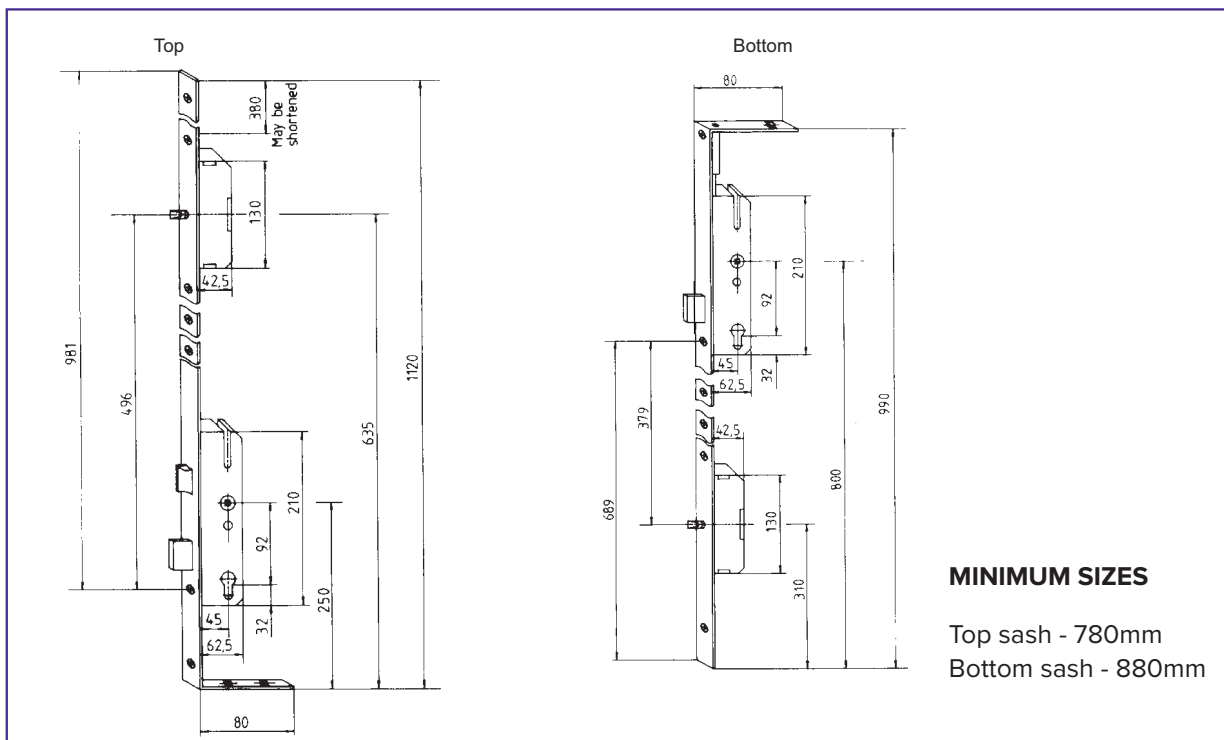


## STABLE DOOR LOCKING SYSTEM

### Multipoint lock designed specifically for use on stable doors

- Top locking part equipped with round bolt, reversible latch and deadbolt with anti-saw pins.
- Bottom locking part equipped with round bolt, anti-saw pins and top shootbolt to secure into upper leaf. Operated by thumb turn cylinder.
- Both locking parts key/cylinder operated.



### MATERIAL SPECIFICATION

- ❖ Lock Case - Steel acc EN 10149 / Zinc plated
- ❖ Face Plate - Steel acc. EN 10149
- ❖ Latch Bolt - Zinc Diecasting acc. 1743-2 / Nickel Plated EN 12540
- ❖ Deadbolt - Zinc Diecasting acc. 1743-2 / Nickel Plated EN 12540
- ❖ Spindle Square - Brass acc. DIN 1709
- ❖ Handle-spring Housing - Zinc Diecasting acc. 1743-2 / Yellow Bichomated EN 12330
- ❖ Handle-spring - Steel acc. DIN 2076-D
- ❖ Drive Gear - Steel acc. EN 10149
- ❖ Slider - Steel acc. EN 10149 / Zinc Plated
- ❖ Tumbler - Zinc Diecasting acc. 1743-2 / Nickel Plated EN 12540
- ❖ Tumbler Spring - Steel acc. DIN 2076-D

### TECHNICAL SPECIFICATION

- ❖ Type - Stable Door - 2 Pin
- ❖ Operation - Lever/Lever, Lever/Pull, Cylinder
- ❖ Pz - 92
- ❖ Backset (mm) - 35
- ❖ Faceplate (mm) - 24

For further assistance, call 01702 613733

[www.climatec-windows.co.uk](http://www.climatec-windows.co.uk)

11-14 Fletchers Square, Temple Farm Industrial Estate, Southend-on-Sea, Essex SS2 5RN